

NetScreen Security Appliances



NETSCREEN™
Scalable Security Solutions



Pictured: Select NetScreen Security Appliances

At a glance

- **Purpose-built, integrated appliances**

High-performance security appliances that integrate firewall, VPN, and traffic management, all with industry-leading performance

- **Products to meet any business need**

Applications include securing a broadband telecommuter, small, medium, or large enterprises, high-traffic e-business sites, and other security environments

- **Installation and management**

Installs in minutes and can be managed using a built-in WebUI, command line interface, or NetScreen's central management solutions, which scale to thousands of devices

- **Common feature set**

All appliances offer the same core features and management interface, simplifying administration and use

NetScreen security appliance product line overview

NetScreen Technologies Inc.'s line of integrated security appliances are purpose-built Internet security appliances that combine firewall, virtual private networking (VPN), and traffic management functions. All NetScreen integrated security appliances feature hardware accelerated IPSec encryption, even for 3DES encryption, and very low latency, allowing them to seamlessly fit into any network. Installing and managing appliances is easily accomplished using a built-in WebUI, command line interface, or NetScreen's central management solutions.

Firewall security

NetScreen's appliance product line provides a scalable security solution, ranging from protecting broadband telecommuters to large corporate offices and e-business sites. NetScreen's full-featured firewall uses technology based on stateful inspection, securing against intruders and denial-of-service attacks.

- NetScreen's ScreenOS software includes an ICSA-certified stateful inspection firewall
- Fully integrated solution with security-optimized hardware, operating system and firewall, which provides higher level of security than patched-together software-based solutions
- Robust attack prevention including SYN attack, ICMP flood, Port Scan, and others; combined with hardware accelerated session ramp rates provides protection even in high stress environments

- Network Address Translation (NAT) and Port Address Translation (PAT)—to hide internal, non-routable IP addresses

Virtual Private Networking (VPN)

Integrated into all NetScreen Appliances is a full-featured VPN solution supporting site-to-site and remote-access VPN applications.

- VPNC tested compatibility with other IPSec certified devices
- 3DES, DES and AES encryption using digital certificates (PKI X.509), IKE auto-key, or manual key
- SHA-1 and MD5 strong authentication
- Support for mesh and hub and spoke VPN networks to provide customers the ability to deploy one, or a hybrid of both, to meet deployment requirements

Traffic management

Traffic management allows a network administrator to monitor, analyze, and allocate bandwidth utilized by various types of network traffic in real time, helping to ensure that business-critical traffic isn't impacted by web surfing or other non-critical applications.

- Manage based on IP Address, user, application, or time of day
- Set guaranteed bandwidth and maximum bandwidth
- Up to eight prioritization levels
- Support for industry standard diffserv packet marking, allowing a NetScreen security appliance to participate in an MPLS environment

NetScreen-204 and NetScreen-208



The NetScreen-200 Series includes two products, the NetScreen-204 and the NetScreen-208, differentiated by the number of 10/100 interfaces. Together, they are two of the most versatile security appliances available today, easily integrating into many different environments, including medium and large enterprise offices, e-business sites, data centers, and carrier infrastructures. Complete with either four or eight auto-speed-sensing, auto-polarity-correcting 10/100 Base-T Ethernet ports, the NetScreen-200 Series performs firewall functions at near wire-speed (550 Mbps on the NetScreen-208 and 400 Mbps on the NetScreen-204). Even the most computationally-intensive applications, such as 3DES encryption, are performed at speeds greater than 200 Mbps.

Multiple interfaces for flexible deployments

Supporting either four (NetScreen-204) or eight (NetScreen-208) 10/100 interfaces, the NetScreen-200 Series easily adapts to network requirements, providing advanced levels of security beyond simple inside and outside networks. Using multiple interfaces, networks can be segmented into more pieces, better separating potential threats from valuable resources.

Firewall attack protections on every interface

All interfaces support firewall denial-of-service and attack prevention, protecting against external and internal attacks. Each interface supports up to 28 attack preventions that are configurable per interface. This provides added flexibility and security for today's networks.

VPN tunnels on any interface

The NetScreen-200 Series supports the ability to initiate and/or terminate IPSec VPN tunnels on any interface, allowing advanced VPN deployments. One critical application of this feature is in wireless LANs, where encryption can now be used to secure internal communication over wireless networks by terminating VPN tunnels on internal interfaces. Combined with firewall and user authentication services, networks can now be locked down from unwanted access and wireless traffic can be encrypted to ensure privacy.

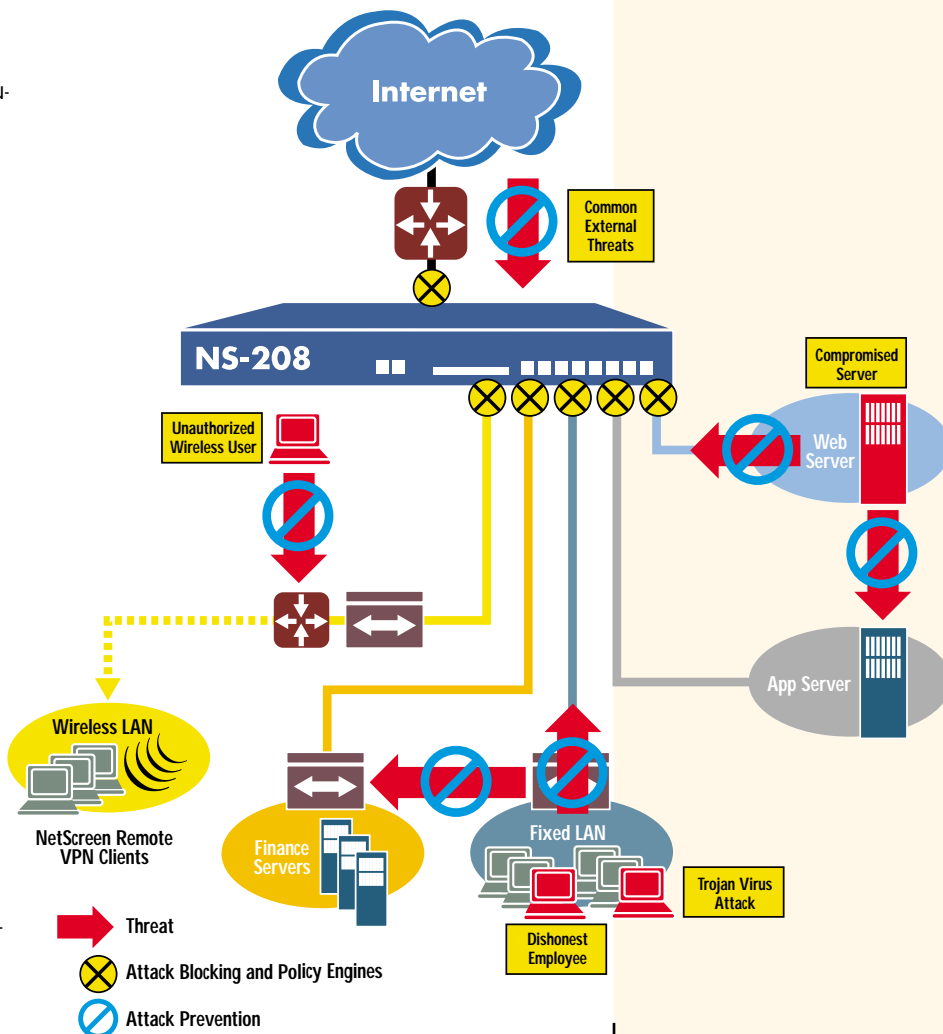
Central point in hub and spoke VPNs

The NetScreen-200 Series is ideal at the central site of a hub and spoke VPN network. Instead of configuring VPN tunnels between every remote site, configure one VPN tunnel to the central site, and let the central site route the traffic to the correct remote site. This is more easily achieved with the NetScreen-200 Series due to the high VPN capacity and throughput.

High availability (device redundancy)

The NetScreen-200 Series supports high availability, maintaining full session synchronization, including IPSec Security Associations (SAs). Since all sessions and IPSec SAs are maintained between both devices, the fail-over from the Master device to the Backup device occurs with near-zero interruption to the network.

Advanced Security Solutions





The NetScreen-100 is one of the most versatile security products available today, easily integrating into many different environments, including medium and large enterprise offices and service provider environments. Complete with three auto-sensing 10/100 Base-T Ethernet ports, the NetScreen-100 performs at near-wire-speed for even the most intense applications, such as 3DES encryption.

High availability (device redundancy)

The NetScreen-100 supports high availability, maintaining full session synchronization, including IPSec Security Associations. Since all sessions and IPSec SAs are maintained between both devices, the fail-over from the Master device to the Slave device occurs with near-zero interruption to the network.

Transparent mode support

All NetScreen appliances and systems support the ability to be configured in transparent mode, where no interfaces have IP addresses. This allows the security device to be deployed more easily into complex and existing networks, since the other networking devices typically do not need to change significantly. In transparent mode, firewall attack protections, VPN tunnels, and traffic management are all supported features.

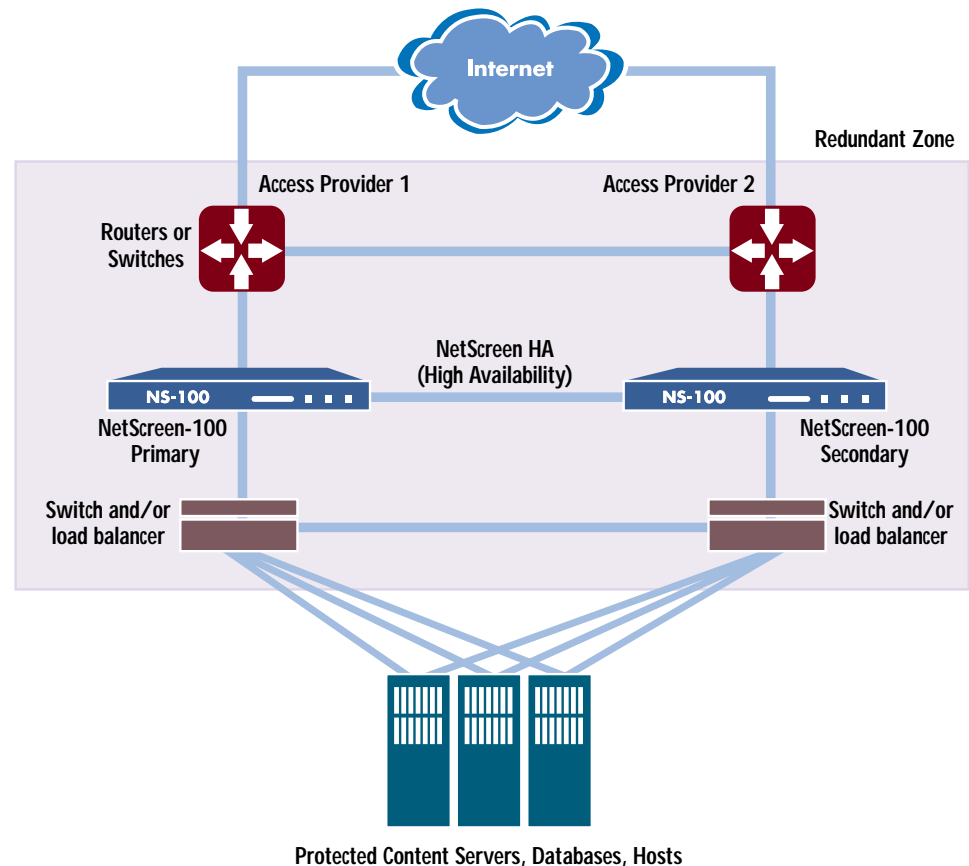
Co-location friendly

Measuring only 10.8" x 17.5" x 1.75", the NetScreen-100 is rack mountable and includes rack-mounting brackets. Additionally, the NetScreen-100 offers AC and dual-feed DC power supply options.

The Power of ASICs

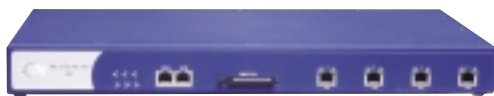
NetScreen's GigaScreen security ASIC processes the firewall access policies and encryption algorithms in hardware, which is a significantly faster approach than in software and one that frees the CPU to manage data flow. This security-accelerating ASIC is tightly integrated with NetScreen's ScreenOS operating system and system software to eliminate unnecessary software layers and security holes found in other security products built on general-purpose commercial operating systems. By bringing security functionality to the system level, NetScreen has removed the overhead of extra platform layers that currently degrade the performance of other security products, which are typically PC-based or workstation-based solutions.

High Availability for Maximum Uptime



High availability (HA) ensures that data continues to flow to servers should any link or service fail in the "redundant zone."

NetScreen-50 and NetScreen-25



The NetScreen-50 and NetScreen-25 offer a complete security solution for small- and medium-sized companies as well as enterprise branch and remote offices. Featuring four auto-sensing 10/100 Base-T Ethernet ports (trust, untrust, DMZ, and one reserved for future use), the NetScreen-50 is a high performance security appliance, offering 170 Mbps of firewall and 50 Mbps of 3DES VPN, protecting your LANs as well as public servers such as mail, web, or FTP. The NetScreen-25 has the same interfaces and offers 100 Mbps of firewall and 20 Mbps of 3DES VPN.

Full-featured products at a great price

Featuring firewall, VPN, and traffic management technology found in NetScreen's other appliances, the NetScreen-50 and NetScreen-25 are truly all-in-one solutions offered at a great price.

IPSec NAT traversal

All NetScreen appliances support the ability to connect two NetScreen devices, or a NetScreen device and a compatible remote client, with an IPSec VPN tunnel even when there are intervening devices that perform NAT.

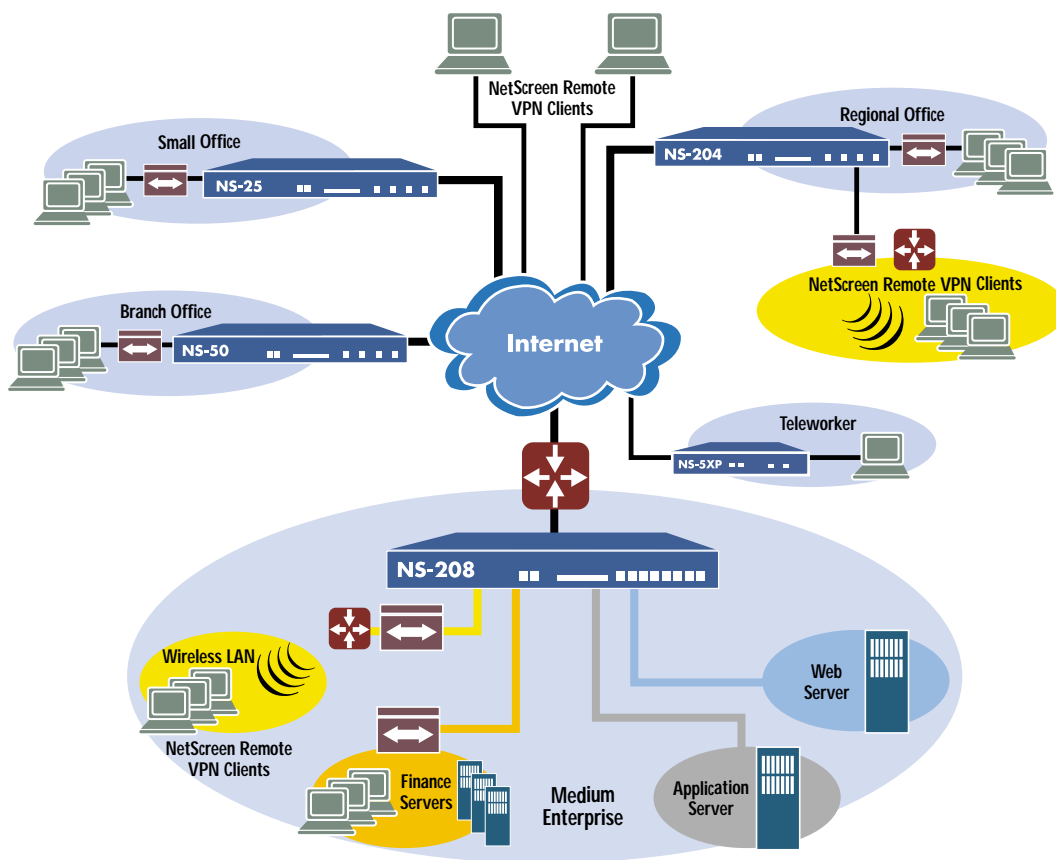
DHCP server

All NetScreen security appliances can be configured as DHCP servers to assign IP addresses to the trusted network. This alleviates many of the management issues and administrative time associated with IP address management. In addition, this alleviates the need for a separate DHCP server to be managed and deployed in the network to provide this functionality.

Reliability and security of appliances

Not only is it easy to install and manage NetScreen's all-in-one security appliances, but they also offer improved reliability and security. Without the typical reliability issues of disk drives and other moving parts, appliances are the best long-term solutions when up-time is important. NetScreen appliances only require configuration and management of the firewall, VPN, and traffic management features, alleviating the need to configure separate hardware and operating systems. This limits the time required to install the security device and reduces the number of setup steps where security holes are often created.

Complete Solutions for all Environments





Robust, easy-to-use management

NetScreen's appliances include robust management support, allowing a network administrator to securely manage the devices. Since VPN functionality is built in, all management can be encrypted for truly secure remote management.

- *Menu-driven central site management using NetScreen-Global PRO* or NetScreen-Global PRO Express**
- *Browser-based management with the built-in WebUI*
- *Command line interface (CLI) accessible in-band via SSH, Telnet, and out-of-band via console and modem ports*
- *E-mail alerts, SNMP traps and alarms*
- *Syslog, SNMP, WebTrends and MicroMuse NetCool interfaces enable easy integration with third-party reporting systems*

*Supported in future on the NetScreen-200 series

While at the entry level of the NetScreen appliance product line, the NetScreen-5XP still offers an enterprise-class solution. Using the same firewall, VPN, and traffic management technology as NetScreen's high-end central site products, the NetScreen-5XP is fully capable of securing a broadband telecommuter or a small office. The NetScreen-5XP is offered in two versions, the 10-user version supporting up to 10 users and the Elite, supporting an unrestricted number of users.

PPPoE and DHCP client

The NetScreen-5XP's untrusted interface can be automatically assigned an IP address using PPPoE and DHCP, common in DSL and cable networks. The NetScreen-25, NetScreen-50, and NetScreen-200 Series can also have their untrusted interfaces assigned IP addresses dynamically or statically using PPPoE.

High performance for a small device

While only weighing 1 lb., the NetScreen-5XP supports 2,000 concurrent TCP/IP sessions, 10 active VPN tunnels, and is available in 10-user and unrestricted user versions. The NetScreen-5XP offers near wire-speed firewall and 3DES performance over its two 10Base-T ports.

Content filtering

All NetScreen Appliances may optionally integrate with the Websense™ content filtering solution, to block inappropriate content and defer personal browsing to non-work hours. The Websense server can be deployed on site with the NetScreen device, or remote and branch office NetScreen devices can filter traffic using a centrally located Websense server, alleviating the need for a Websense server at every location and easing administrative requirements.

Appliance Features

Feature	NetScreen-200 Series (1)	NetScreen-100 (2)	NetScreen-50 (2)	NetScreen-25 (2)	NetScreen-5XP (2)
Performance					
Concurrent sessions	128,000	128,000	8,000	4,000	2,000
New sessions/second	13,000	17,000	8,000	4,000	2,000
Firewall performance	400 or 550 Mbps	200 Mbps	170 Mbps	100 Mbps	10 Mbps
Triple-DES (168 bit)	200 Mbps	195 Mbps	50 Mbps	20 Mbps	10 Mbps
Policies	4,000	4,000	1,000	500	100
Schedules	256	256	256	256	256
Interfaces	4 or 8 10/100 Base-T	3 10/100 Base-T	4 10/100 Base-T (3)	4 10/100 Base-T (3)	2 10 Base-T
Mode of Operation					
Transparent mode (all interfaces)	Yes	Yes	Yes	Yes	Yes
Route mode (all interfaces)	Yes	Yes	Yes	Yes	Yes
NAT (Network Address Translation)	Yes (per interface)	Yes	Yes	Yes	Yes
Policy-based NAT	Yes	Yes	Yes	Yes	Yes
PAT (Port Address Translation)	Yes	Yes	Yes	Yes	Yes
Virtual IP	4	4	2	2	1
Mapped IP	4,000	4,000	1,000	1,000	32
IP routing—static routes	256	256	60	60	16
Users per port, Trusted	Unrestricted	Unrestricted	Unrestricted	Unrestricted	Unrestricted
IP Address Assignment					
Static	All	All	All	All	All
DHCP client	N/A	N/A	Untrusted interface	Untrusted interface	Untrusted interface
PPPoE client	Untrusted interface	Untrusted interface	Untrusted interface	Untrusted interface	Untrusted interface
Internal DHCP server	Trusted interface	Trusted interface	Trusted interface	Trusted interface	Trusted interface
DHCP Relay	Yes	Yes	Yes	Yes	Yes
Firewall Attacks Detected					
Syn attack	Yes	Yes	Yes	Yes	Yes
ICMP flood	Yes	Yes	Yes	Yes	Yes
UDP flood	Yes	Yes	Yes	Yes	Yes
Ping of death	Yes	Yes	Yes	Yes	Yes
IP spoofing	Yes	Yes	Yes	Yes	Yes
Port scan	Yes	Yes	Yes	Yes	Yes
Land attack	Yes	Yes	Yes	Yes	Yes
Tear drop attack	Yes	Yes	Yes	Yes	Yes
Filter IP source route option	Yes	Yes	Yes	Yes	Yes
IP address sweep attack	Yes	Yes	Yes	Yes	Yes
WinNuke attack	Yes	Yes	Yes	Yes	Yes
Java/ActiveX/Zip/EXE	Yes	Yes	Yes	Yes	Yes
Default packet deny	Yes	Yes	Yes	Yes	Yes
User-defined Malicious URL	48	48	48	48	48
Per-source session limiting	Yes	Yes	Yes	Yes	Yes
Syn fragments	Yes	Future ScreenOS	Future ScreenOS	Future ScreenOS	Future ScreenOS
Syn and Fin bit set	Yes	Future ScreenOS	Future ScreenOS	Future ScreenOS	Future ScreenOS
No flags in TCP	Yes	Future ScreenOS	Future ScreenOS	Future ScreenOS	Future ScreenOS
FIN with no ACK	Yes	Future ScreenOS	Future ScreenOS	Future ScreenOS	Future ScreenOS
ICMP fragment	Yes	Future ScreenOS	Future ScreenOS	Future ScreenOS	Future ScreenOS
Large ICMP	Yes	Future ScreenOS	Future ScreenOS	Future ScreenOS	Future ScreenOS
IP source route	Yes	Future ScreenOS	Future ScreenOS	Future ScreenOS	Future ScreenOS
IP record route	Yes	Future ScreenOS	Future ScreenOS	Future ScreenOS	Future ScreenOS
IP security options	Yes	Future ScreenOS	Future ScreenOS	Future ScreenOS	Future ScreenOS
IP timestamp	Yes	Future ScreenOS	Future ScreenOS	Future ScreenOS	Future ScreenOS
IP stream	Yes	Future ScreenOS	Future ScreenOS	Future ScreenOS	Future ScreenOS
IP bad options	Yes	Future ScreenOS	Future ScreenOS	Future ScreenOS	Future ScreenOS
Unknown protocols	Yes	Future ScreenOS	Future ScreenOS	Future ScreenOS	Future ScreenOS
VPN					
Dedicated VPN tunnels	1,000	1,000	100	25	10
Manual Key, IKE, PKI (X.509)	Yes	Yes	Yes	Yes	Yes
DES (56-bit), 3DES (168-bit) & AES encryption	Yes	Yes	Yes	Yes	Yes
Perfect forward secrecy (DH Groups)	1,2,5	1,2,5	1,2,5	1,2,5	1,2,5
Prevent replay attack	Yes	Yes	Yes	Yes	Yes
Remote access VPN	Yes	Yes	Yes	Yes	Yes
L2TP within IPsec	Yes	Yes	Yes	Yes	Yes
Site-to-site VPN	Yes	Yes	Yes	Yes	Yes
Star (hub and spoke) VPN network topology	Yes	Yes	Yes	Yes	Yes
IPsec NAT Traversal	Yes	Yes	Yes	Yes	Yes
IPSec Authentication					
SHA-1	Yes	Yes	Yes	Yes	Yes
MD5	Yes	Yes	Yes	Yes	Yes
PKI Certificate requests (PKCS 7 & PKCS 10)	Yes	Yes	Yes	Yes	Yes
Automated certificate enrollment (SCEP)	Yes	Yes	Yes	Yes	Yes
Online Certificate Status Protocol (OCSP)	Yes	Yes	Yes	Yes	Yes

Appliance Features

Feature	NetScreen-200 Series (1)	NetScreen-100 (2)	NetScreen-50 (2)	NetScreen-25 (2)	NetScreen-5XP (2)
Certificate Authorities supported					
VeriSign CA	Yes	Yes	Yes	Yes	Yes
Entrust CA	Yes	Yes	Yes	Yes	Yes
Microsoft CA	Yes	Yes	Yes	Yes	Yes
RSA Keon CA	Yes	Yes	Yes	Yes	Yes
iPlanet (Netscape) CA	Yes	Yes	Yes	Yes	Yes
Baltimore CA	Yes	Yes	Yes	Yes	Yes
DOD PKI CA	Yes	Yes	Yes	Yes	Yes
Firewall & VPN User Authentication					
Built-in (internal) database - user limit	1,500	1,500	500	500	100
RADIUS (external) database	Yes	Yes	Yes	Yes	Yes
RSA SecureID (external) database	Yes	Yes	Yes	Yes	Yes
LDAP (external) database	Yes	Yes	Yes	Yes	Yes
Traffic Management					
Guaranteed bandwidth	Yes	Yes	Yes	Yes	Yes
Maximum bandwidth	Yes	Yes	Yes	Yes	Yes
Priority-bandwidth utilization	Yes	Yes	Yes	Yes	Yes
DiffServ stamp	Yes	Yes	Yes	Yes	Yes
High Availability (HA)					
High Availability (HA)	Yes	Yes	Future ScreenOS	No	No
Session protection for firewall and VPN	Yes	Yes	Future ScreenOS	N/A	N/A
Device failure detection	Yes	Yes	Future ScreenOS	N/A	N/A
Link failure detection	Yes	Yes	Future ScreenOS	N/A	N/A
Network notification on failover	Yes	Yes	Future ScreenOS	N/A	N/A
Authentication for New HA Members	Yes	Yes	Future ScreenOS	N/A	N/A
Encryption of HA Traffic	Yes	Yes	Future ScreenOS	N/A	N/A
System Management					
WebUI (HTTP and HTTPS)	Yes	Yes	Yes	Yes	Yes
Command line interface (console)	Yes	Yes	Yes	Yes	Yes
Command line interface (telnet)	Yes	Yes	Yes	Yes	Yes
Secure Command Shell (ssh v1 compatible)	Yes	Yes	Yes	Yes	Yes
NetScreen-Global PRO	Future ScreenOS	Yes	Yes	Yes	Yes
NetScreen-Global PRO Express	Future ScreenOS	Yes	Yes	Yes	Yes
All mgm't via VPN tunnel on any interface	Yes	Yes	Yes	Yes	Yes
SNMP Full Custom MIB	Yes	Yes	Yes	Yes	Yes
Administration					
Multiple administrators	20	20	20	20	20
Remote administrator database	RADIUS	RADIUS	RADIUS	RADIUS	RADIUS
Administrative networks	6	6	6	6	6
Root Admin, Admin, & Read Only user levels	Yes	Yes	Yes	Yes	Yes
Software upgrades & config changes	TFTP/Web UI	TFTP/Web UI/Global	TFTP/Web UI/Global	TFTP/Web UI/Global	TFTP/Web UI/Global
Logging/Monitoring					
Syslog	External	External	External	External	External
E-mail (2 addresses)	Yes	Yes	Yes	Yes	Yes
NetIQ WebTrends	External	External	External	External	External
SNMP	Yes	Yes	Yes	Yes	Yes
Traceroute	Yes	Yes	Yes	Yes	Yes
VPN tunnel monitor	Yes	Yes	Yes	Yes	Yes
Websense URL filtering	External	External	External	External	External
External Flash					
CompactFlash™	96 or 512 MB options	No	96 or 512 MB options	96 or 512 MB options	No
PCMCIA Flash	No	96 MB option	No	No	No
Event logs & alarms	Yes	Yes	Yes	Yes	No
System config script	Yes	Yes	Yes	Yes	No
ScreenOS software	Yes	Yes	Yes	Yes	No
Dimensions and Power					
Height	1.73 inches	1.75 inches	1.73 inches	1.73 inches	1.25 inches
Width	17.5 inches	17.5 inches	17.5 inches	17.5 inches	6 inches
Length	10.8 inches	10.8 inches	10.8 inches	10.8 inches	5 inches
Weight	8 lbs.	8 lbs.	8 lbs.	8 lbs.	1 lb.
Rack mountable	Yes	Yes	Yes	Yes	Yes, with separate kit
Power Supply (AC)	90 to 264 VAC, 45 W	90 to 264 VAC, 30 W	90 to 264 VAC, 45 W	90 to 264 VAC, 45 W	90 to 264 VAC to power supply, 5 VDC to NS-5XP, 7.5 W
Power Supply (DC)	-36 to -72 VDC, 50 W	-36 to -72 VDC, 30 W	-36 to -72 VDC, 50 W	-36 to -72 VDC, 50 W	N/A

(1) Performance, capacity, and features provided with ScreenOS 3.1.0r1. May vary with other ScreenOS releases.

(2) Performance, capacity, and features provided with ScreenOS 3.0.0r1. May vary with other ScreenOS releases.

(3) Only three interfaces currently supported. 4th interface supported in future ScreenOS release.

Specifications and Ordering Information

Specifications:

Standards supported

ARP, TCP/IP, UDP, ICMP, HTTP, RADIUS, LDAP, SecureID, IPsec (ESP, AH), MD5, SHA-1, AES, DES, 3DES, L2TP, IKE (ISAKMP), TFTP (client), SNMP, X.509v3, DHCP, PPPoE, SCEP, OCSP

Safety Certifications

FCC, UL, CE, CUL, C-Tick, VCCI, BSMI, CSA Environments

Environment

Temperature: 40-105 degrees F,
5-40 degrees C,
Humidity: 5-90%, non-condensing

MTBF (Bellcore model)

NetScreen-5XP: 8.8 years
NetScreen-25: 8.1 years
NetScreen-50: 8.1 years
NetScreen-100: 6.4 years
NetScreen-204: 6.8 years
NetScreen-208: 6.5 years

Ordering information:

Product Part Number

NetScreen-208 w/AC power supply

NetScreen-208	US power cord	NS-208-001
NetScreen-208	UK power cord	NS-208-003
NetScreen-208	Europe power cord	NS-208-005
NetScreen-208	Japan power cord	NS-208-007

NetScreen-204 w/AC power supply

NetScreen-204	US power cord	NS-204-001
NetScreen-204f**	US power cord	NS-204-101
NetScreen-204	UK power cord	NS-204-003
NetScreen-204f**	UK power cord	NS-204-103
NetScreen-204	Europe power cord	NS-204-005
NetScreen-204f**	Europe power cord	NS-204-105
NetScreen-204	Japan power cord	NS-204-007
NetScreen-204f**	Japan power cord	NS-204-107

NetScreen-100 w/AC power supply

NetScreen-100a	US power cord	NS-100-001
NetScreen-100e	(56-bit DES only)	NS-100-002
NetScreen-100f**		NS-100-003

NetScreen-100 w/DC power supply

NetScreen-100a	US power cord	NS-100-001-DC
----------------	---------------	---------------

NetScreen-50 w/AC power supply

NetScreen-50	US power cord	NS-050-001
NetScreen-50f**	US power cord	NS-050-101
NetScreen-50	UK power cord	NS-050-003
NetScreen-50f**	UK power cord	NS-050-103
NetScreen-50	Europe power cord	NS-050-005
NetScreen-50f**	Europe power cord	NS-050-105
NetScreen-50	Japan power cord	NS-050-007
NetScreen-50f**	Japan power cord	NS-050-107

NetScreen-50 w/DC power supply

NetScreen-50		NS-050-001-DC
--------------	--	---------------

NetScreen-25 w/AC power supply

NetScreen-25	US power cord	NS-025-001
NetScreen-25	UK power cord	NS-025-003
NetScreen-25	Europe power cord	NS-025-005
NetScreen-25	Japan power cord	NS-025-007

NetScreen-5XP 10-user

NetScreen-5XP	US power cord	NS-5XP-001
NetScreen-5XP	UK power cord	NS-5XP-003
NetScreen-5XP	Europe power cord	NS-5XP-005
NetScreen-5XP	Japan power cord	NS-5XP-007

Upgrade from NetScreen-5XP 10-user to NetScreen-5XP Elite NS-5XP-ELU

Product Part Number

NetScreen-5XP Elite (unrestricted users)

NetScreen-5XP Elite	US power cord	NS-5XP-101
NetScreen-5XP Elite	UK power cord	NS-5XP-103
NetScreen-5XP Elite	Europe power cord	NS-5XP-105
NetScreen-5XP Elite	Japan power cord	NS-5XP-107
Rack mount kit for 2 NetScreen-5XPs		NS-5XP-RMK

** "f" products do not include VPN functionality (international only)

NetScreen product warranty and services

The standard hardware warranty is for a period of one year. The system software has a 90-day warranty that it will meet published specifications. Optional hardware maintenance and software subscription services are also available. These services are recommended to ensure the system is kept updated with the latest software enhancements and to ensure high availability for end users. Phone support services and training courses are also available from NetScreen.

For more information about NetScreen products, call toll-free 1-800-638-8296 or visit us at www.netscreen.com



NETSCREEN™
Scalable Security Solutions

350 Oakmead Parkway
Sunnyvale, CA 94085
Phone: 408.730.6000
Fax: 408.730.6200

www.netscreen.com

Copyright © 1998-2002 NetScreen Technologies, Inc.

NetScreen Technologies, Inc., the NetScreen logo, NetScreen-5, NetScreen-5XP, NetScreen-10, NetScreen-25, NetScreen-50, NetScreen-100, NetScreen-204, NetScreen-208, NetScreen-500, NetScreen-1000, NetScreen-Global PRO, NetScreen-Global PRO Express, NetScreen-Remote, GigaScreen ASIC, and NetScreen ScreenOS are trademarks and NetScreen is a registered trademark of NetScreen Technologies, Inc. All other trademarks and registered trademarks are the property of their respective companies.

Part Number: 2002.1.50.1.aps